

MATLACHA HOOKER'S MERCHANDISE MEMBER CATALOG

Matlacha Hookers, Inc. is a qualified charitable organization under 501c3 of the IRS. Your merchandise purchase is considered a donation that in turn supports community outreach projects and educational programs in schools in Lee County, Florida.

NEW!!! Matlacha Hooker Performance Shirts \$30.00

Made of 100% polyester, the Dry-Fit pre-shrunk performance shirts are also UV protective. Perfect for being in the sun, on the beach or boating, you won't have to worry about getting too much sun. Available in sleeveless and long sleeve.

Sleeveless are V-Neck with Image on the front.

Choose from three different images:

1. *Catch the Wave of Giving*
2. *Save the Manatees/ Dolphins/ Turtles/Support the Matlacha Hookers*
3. *Matlacha Hookers Mermaid*

Small, Medium, Large, X Large and XX Large



There are three different design options available on the long-sleeved shirt \$40

1. ***Catch the Wave*** (design on the front)
2. ***The Save the Manatees/ Dolphins/ Turtles/ Support the Matlacha Hookers*** (Logo on front and design on the back)
3. ***Matlacha Hookers Mermaid*** (Logo on front and design on the back)

All options have the Matlacha Hooker logo printed down the right sleeve

Color options are:

Mermaid design white only

Catch the Wave and Save the Manatees:

Teal, Yellow, Light Blue, White

Sizes: Small, Medium, Large, X Large, Xx Large



New! Razorback Tank Top - \$25

Made of 4.3 Oz. 100% ring spun pre-shrunk cotton. Features semi-fitted contoured silhouette with side seam, bound rib trim neck and armhole, & double-needle bottom hem. High stitch density for smoother printing surface.

Colors: Coral, Mint, Blue Marble, and White

Sizes SM through XL check for availability



Back view



LAT Ladies' Premium Jersey V-Neck T-Shirt - \$20

5.5 oz., 100% combed ring spun cotton premium jersey; Top stitched ribbed V-neck collar; Self-fabric back neck tape; Double needle sleeves and bottom hem; Side seam construction; EasyTear@ label; Machine washable/ tumble dry low; Fit: Ladies' Classic – Relaxed

Colors: Pink, Lime Green, Dark Teal, Caribbean Blue

SMALL, MEDIUM, LARGE, X-LARGE, XXL, XXX L



District® Women's Scorecard Tee – SALE PRICE!!!! \$10

With distressed printed stripes, this comfortable tee delivers style fit for a winner.

60% Cotton 40% Polyester LARGE, X-LARGE, XXL LARGE, XXX LARGE

Colors: Heathered Cardinal Red/White stripes

Heathered Royal Blue/White stripes

Heathered Charcoal Gray/White

NEW! Women's V-neck T-shirts with sayings on back of shirt

District® Ladies' Perfect Tri® V-Neck Tee Shirt \$25

Lightweight and extra soft this V-neck tee has the look of perfection. 4.5-ounce 50/25/25 poly/ring spun cotton/rayon 32 singles Tear-away tag.

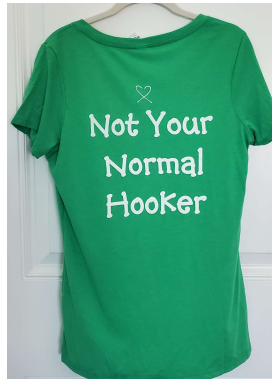
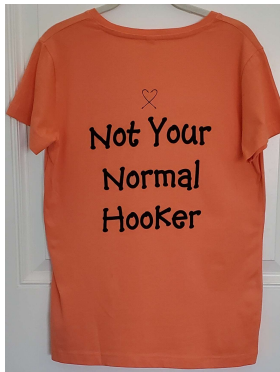
Tri-Blend fabric infuses each garment with unique character. Front of tee has the Matlacha Hooker Logo, either in black or white depending on color of shirt.

Sizes: SM through XL, check for availability

Please choose from colors: Orange, Blue, Green, Pink, Vintage Purple*, Frosted Blue, Frosted Blush

Please choose from following sayings: **Only on back of shirt-** *“Not Your Normal Hooker”*, *“Give Me a Pole, Any Pole Support your local Matlacha Hookers”*, *“Don’t Take Life Lying Down Support Your Local Matlacha Hookers”*.

* *“Peace/Love, Matlacha Hookers”* saying is on the front of V-neck and only in purple



Front view



Gildan® Men's DryBlend® 50 Cotton/50 Poly T-Shirt - Sale Price \$20

Features DryBlend® moisture wicking properties, heat transfer label, double needle sleeve and hem and taped neck and shoulders also have seamless double needle 7/8" Collar. Mermaid designed by local artist Dianne Wickes and Matlacha Hooker member.

Saying "I Love My Matlacha Hooker" Colors: Sand, Grey, Slate Blue, Salmon, Teal

Sizes: MED, LG, XL all colors XXL in Salmon and Tea



Matlacha Hooker's Lightweight Hat - \$20

This super lightweight cap perfect for golf and other hot weather activities. The cap has four perforate d back panels for breath-ability. Velcro Back Closure for adjustable sizing. Colors: Stone Beige with Navy Embroidery, White with Purple Embroidery, Black with Teal Embroidery.



Cotton Blend Child Caps - \$12

These caps have a Velcro Back Closure for adjustable sizing. Purple caps embroidered with Matlacha Hooker Logo or Pine Island. Caps in yellow embroidered with Pine Island.



Matlacha Hooker's Tote Bag – Sale Price \$20

Made from a medium weight canvas, this wide tote measures 18" x 15". Features vegan leather, double riveted handles and has the Matlacha Hooker's Logo imprinted in slate grey.





Slim Line License Plate/ Frame \$1

Fits most state's plate & sticker requirements. Check state laws to determine the legality of the frame. We will not be responsible for frames deemed illegal. Disclaimer: Because of the vast number of makes and models of cars and the different sizes of state license tags, it is impossible to adapt a single frame to accommodate all vehicles. A proper fit cannot be guaranteed. Complies with CPSIA, Prop 65. 6 1/4" H x 12 1/4" W



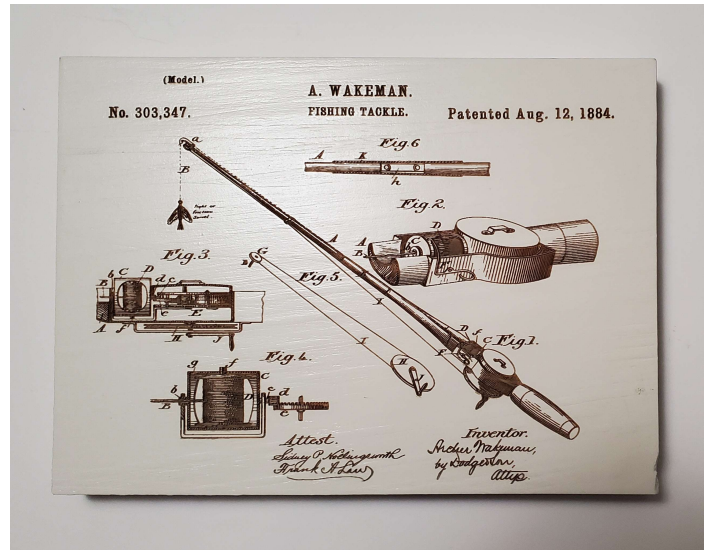
NEW! Slim Can Koozies - \$3 each – 5 colors to chose from

Slide-on type koozie. Matlacha Hookers Logo on both sides

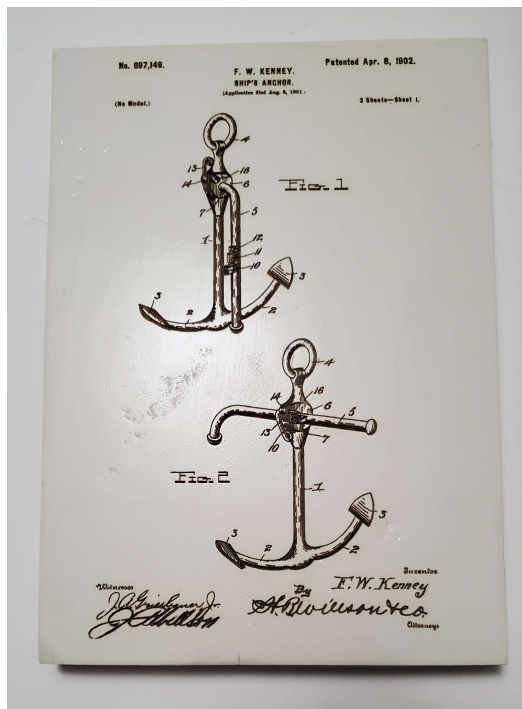
Fire and Pine Company Home Decor Customed wood wall maps, nostalgic wood wall patents of famous inventions, and map ornaments. Anchor, Compass, or Fishing Rod patents shown.



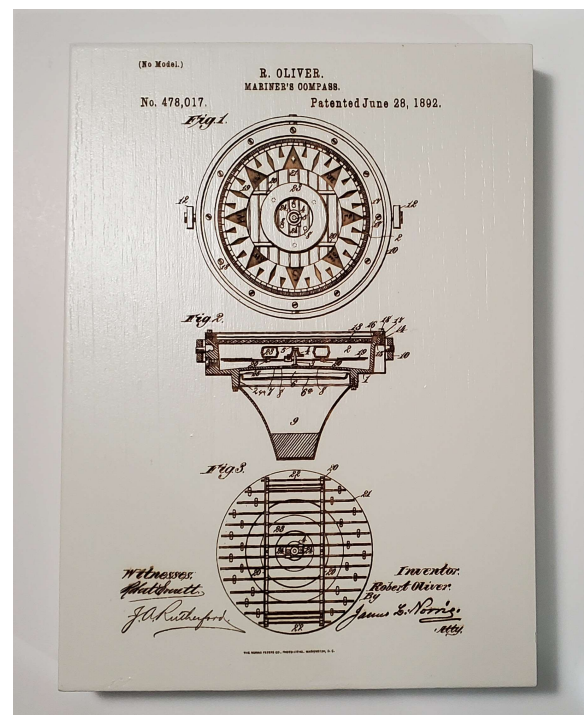
4" x 5" Ornament Color: Seaglass \$15



7.25" x 10" Color: Papier Blanc \$35



7.25" x 10" Color: Papier Blanc \$35



7.25" x 10" Color: Papier Blanc \$35

As craftsmen, each freshly cut piece of wood is milled, ripped, sanded and joined with care. That's why we are committed to protecting our beautiful trees by rooting our sustainability practices deep within our company ethos.



12' x 3.75" Color: Papier Blanc \$25



Two sizes: Mini 7.25" x 12" \$40

Small: 11.25" x 19" \$65

Colors: Papier Blanc, Blue, Sea Glass



Wine Toppers - \$6 and 2 or more \$5 each

BEST GIFT EVER! AND FUNCTIONAL TOO.

After opening a bottle of wine – on a boat, on the beach, or even at home- how many times has it spilled because the stopper isn't on tight? Do you hate that you can't fit open bottles with corks or stoppers in the fridge door and close it?

Have you tried to lay an open bottle with a cork or stopper at an angle or on its side and wine is leaking everywhere? We Hooker's feel your pain!



Simply place this silicone cap on top of your wine bottle. It is liquid tight and the open bottle can rest on its side or even upside down without leaking. No more jamming the cork back in the bottle, no more open bottles leaking all over your fridge, no more rearranging the fridge to fit an open bottle. They virtually fit every wine bottle.

NOTE: Will not work on bottles with carbonated drinks.

And to clean them – simply put it in the dishwasher and its ready for the next bottle. They make wonderful holiday gifts – especially with a bottle of wine. Choose from the wine toppers sayings pictured in the 12 round circles. Packaging photo to right. **And, we also have tops with our Matlacha Hooker logo in Teal and in Purple!**

Topper sayings available (always new sayings shipped): Therapy, Great Minds Drink Alike, Snowman (pic), Hell Yes (wine glass pic), Pour Drink Repeat, I Drink Wine Like a Mother, Drunken Grownup, I am done Adulting for the Foreseeable future, The Pleasure is all Wine, Drink by your Selfie (cell phone pic), Shipfaced (anchor pic), Lake Lush (oars pic), Gecko (pic), All is Calm (figure in rocking chair Xmas), Golf (green flag with ball), Relax(adirondeck chair pic), Hibiscus (pic), I'm on Island Time(palm tree pic), Day Drinkin, Flamingo (pic), I Don't Give a Sip, My favorite day is Winesday, Dog Crazy (heart and paw pic), Mermaid silhouette (pic), Wine Time (wordle pic), Wine is Essential, 19th Hole, Live Laugh Love, In case of Emergency, Remove Cap (red cross pic), I Voted for Wine (American Flag pic), Drink Drank Drunk, Beach Wino, Book Club, Cloud Wine, Designated Drinker, Dog Paw, Drink Local, Drinks Well With Others, State of Florida (pic), Ho (Elf pic), I Earned It, Instant Happiness, Life Saver, Me Time, Medicate, Save the Ta-Tas, Save Water, Drink Wine, Sip- Sip- Hooray, Wine 1-1, Wine Safe, Wishful Drinking, WTF, and You've Been Served.



Wine Corkscrew – Description shown on box SALE \$10





NEW! Car Coasters \$5 each or 2 or more \$4 each

Super absorbent car coasters add flair to function with unique graphics and sayings. Standard size fits most cup holders. Straight-edged side has a bevel for easy removal. Made in the USA.

Other sayings not shown:

Cof-fee A magical substance that turns, “Get out of my face” into “Good morning, Honey!”

I’m not lazy. I just really enjoy doing nothing. (Cat Pic)

Life is Better at the beach (Flip Flop pic)

I love my job when I’m on vacation

Someone honked to get me out of my parking place faster, so now I have to sit here until both of us are dead (car pic)

On weekends my coffee is recreational. As opposed to weekdays when it’s medicinal (travel coffee cup pic)

I don’t mind coming to work, but waiting 8 hours to go home is BS (3 vintage lady pics)

I don’t need an uplifting quote I need a cup of coffee (coffee cup pic)

If you want to impress me with your car, it better be a food truck (Food truck pic)

The only circle of trust you need is a donut. (Donut pic)

I know it’s time to clean out my purse when my car assumes it’s second passenger who’s not wearing a seat belt

If drinking on the porch counts, then I’m outdoorsy (Porch swing pic)

I’m going to the store, need anything. (person in spacesuit pic)

Lazy is a very strong word, I prefer to call it selective participation

No one wants to hear about your diet. Just eat your salad and be sad (salad pic)

Some days, I amaze myself. Other days I look for my keys while I’m holding them.

SEE ORDER FORM NEXT PAGE

"Making a Positive Difference in our Community"

A women's charitable non-profit
501c3 organization

P.O. Box 111, Matlacha, FL 33993

www.matlachahookers.org



MERCHANDISE DONATION ORDER FORM

ITEM DESCRIPTION	COLOR	SIZE	QTY	UNIT PRICE	TOTAL

Name: _____

SUBTOTAL _____

Address: _____

*SHIPPING _____

Email: _____

TOTAL _____

Phone: _____

Payment: CASH CHECK# _____ CREDIT CARD

CC# _____ EXP: ____ / ____

DATE: _____

Signature of card holder _____

THANK YOU!

Call or email first to find shipping amount. (847) 977-9125 or jillfilgut@gmail.com Items may also be picked up at Trader's Hitching Post in Matlacha or at a Matlacha Hooker meeting. Mail payment and form to address above. Exchanges only, no refund.